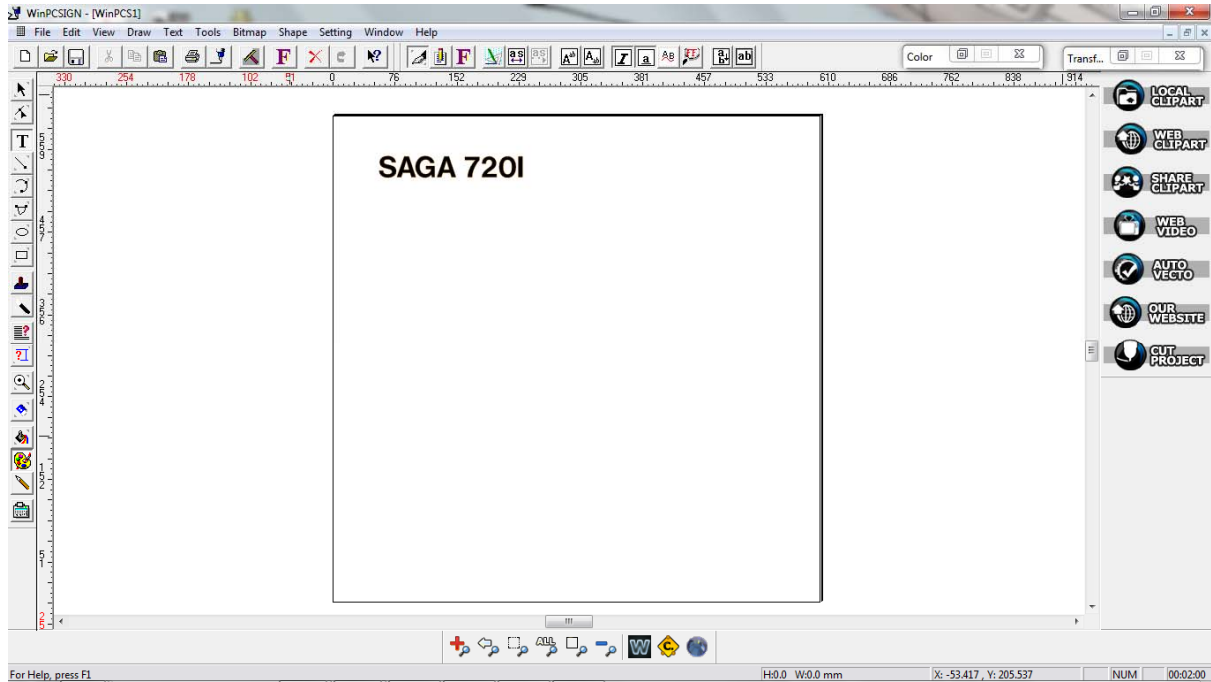


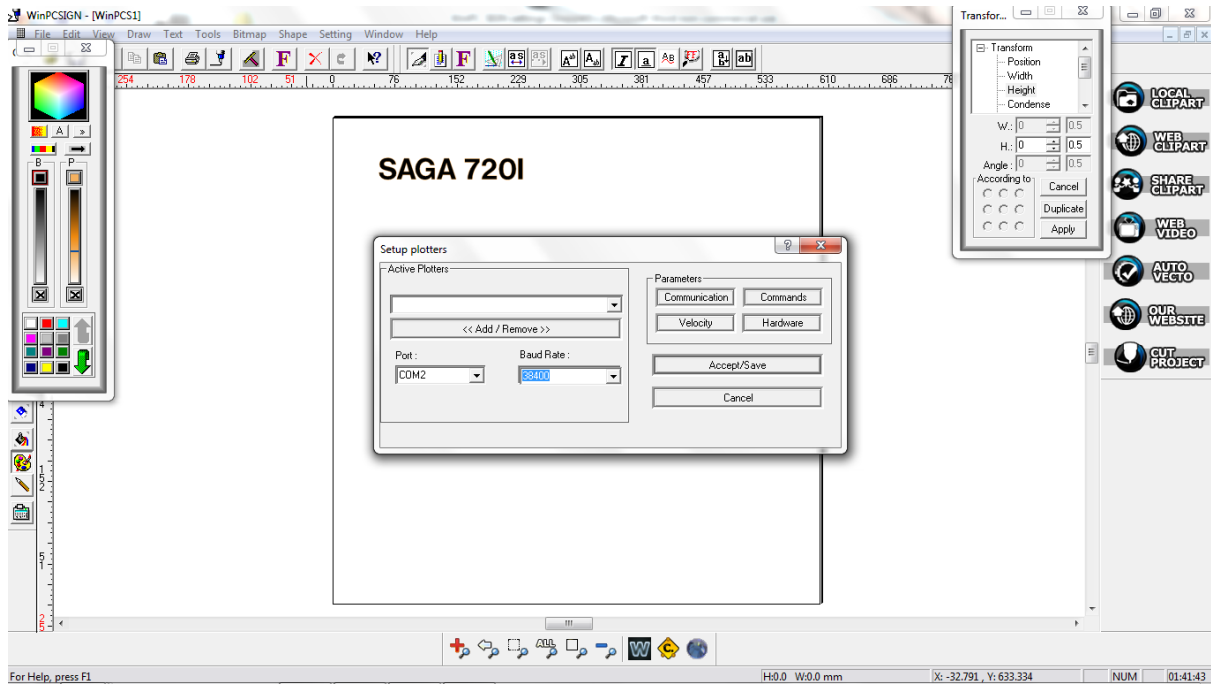
(Version 1.01)

SAGA Servo USB 2.0 and Saga stepper setup on WinPC SIGN

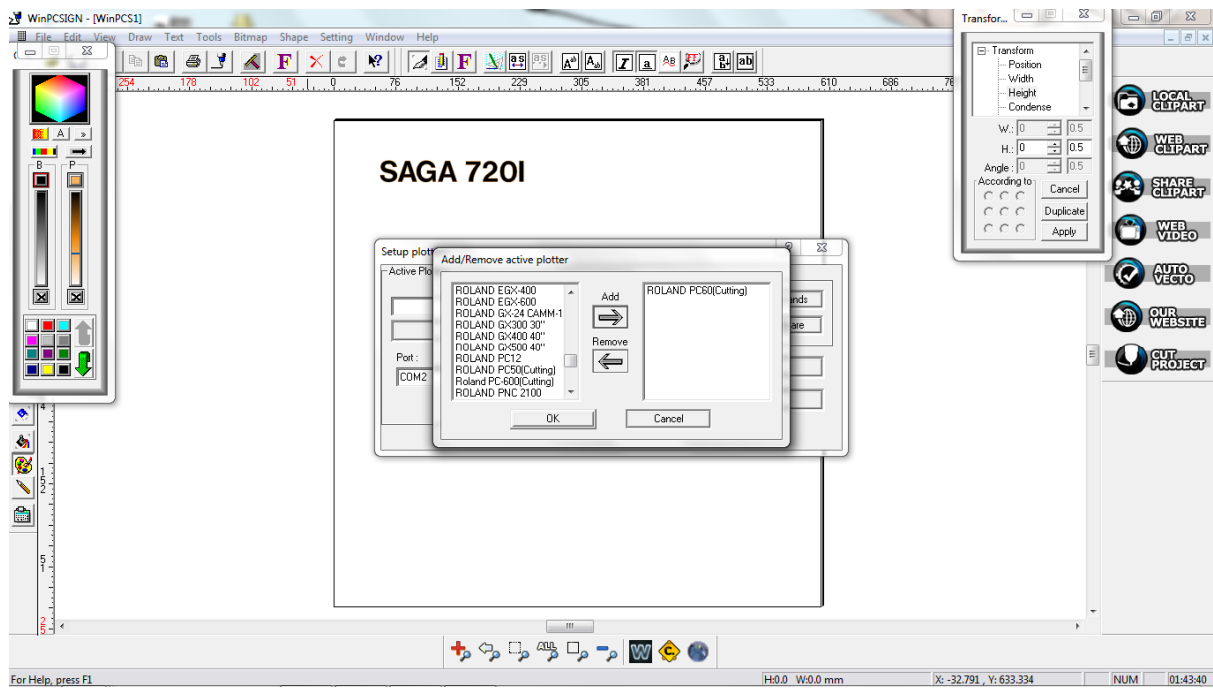
Install the WinPC SIGN dongle into an available USB port and open the WinPC SIGN software. Select the **T** icon to the left of the screen and type some text on the design panel for the test. (Below)



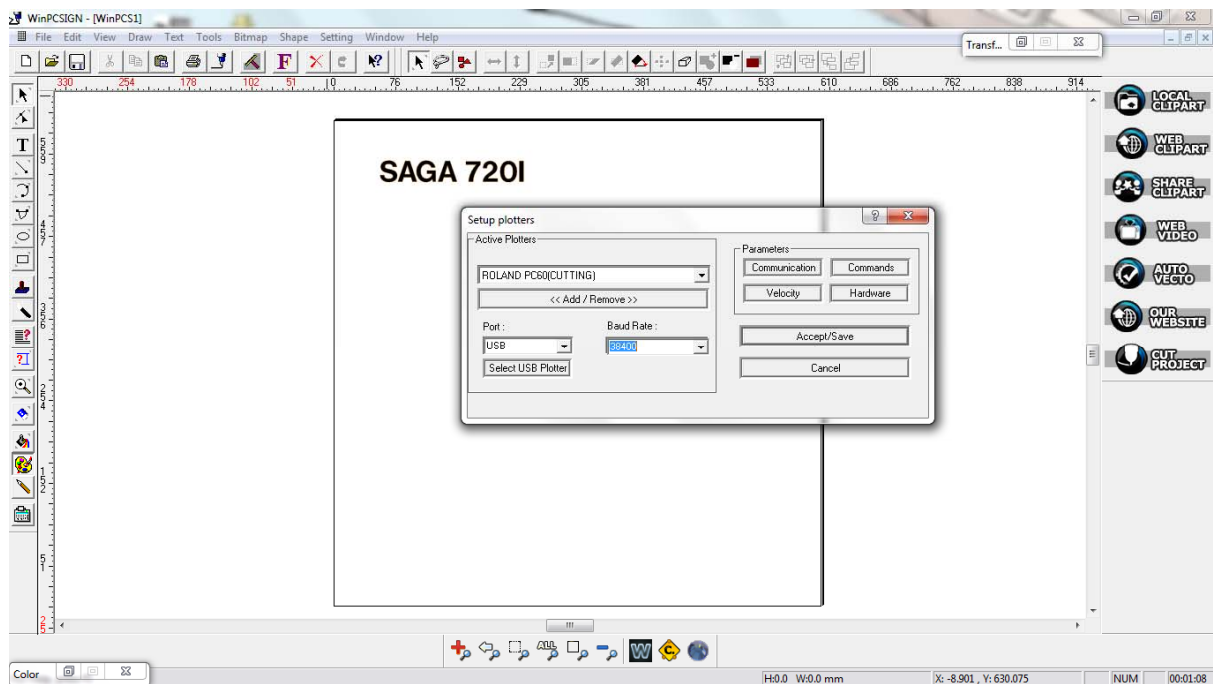
Select **Settings/Plotter** codes to bring up the **Setup plotters** window below.



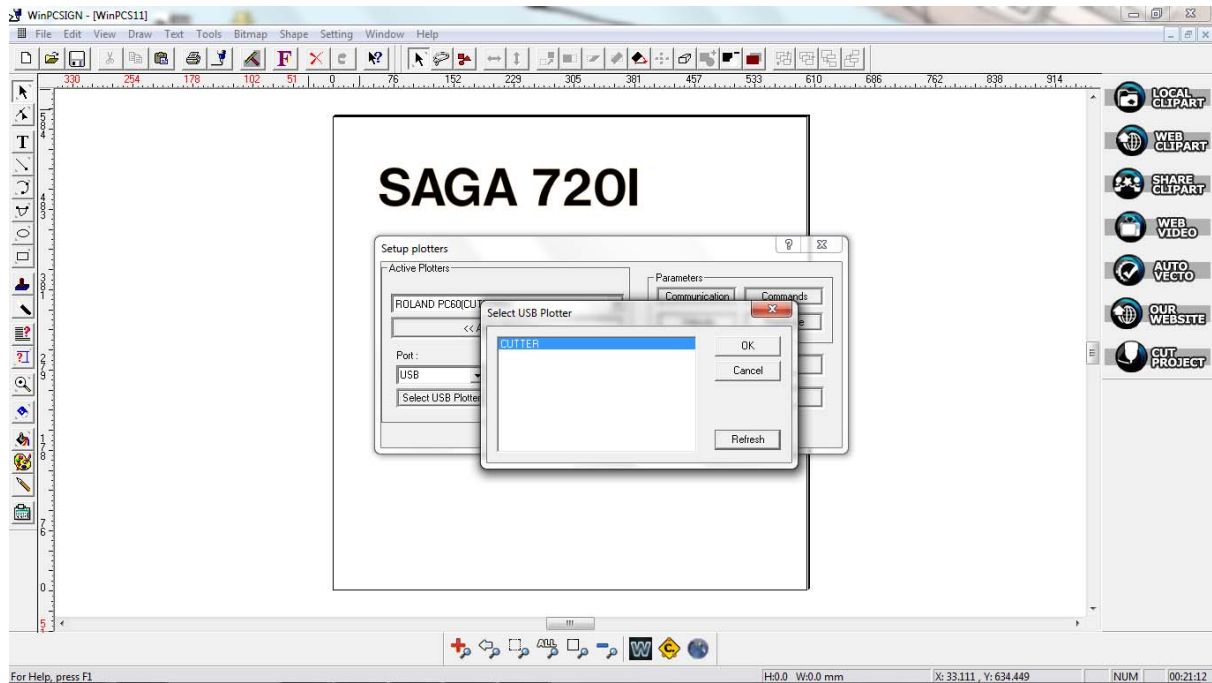
Select the **Add/Remove** button to bring up the **Add/Remove Active Plotters** window. Scroll down the list to find and select the **ROLAND PC60(Cutting)** driver. Click on the **Add** button and select **OK** to close this window. (Below)



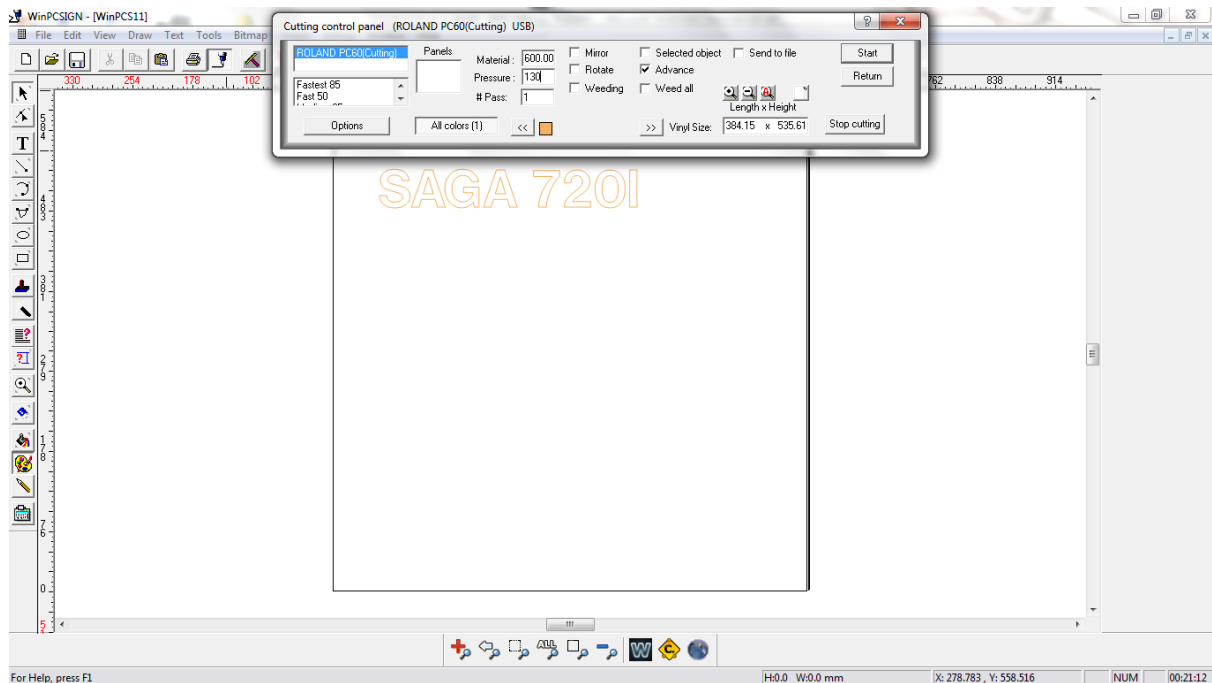
Make sure the settings are as below.



Under the **Port** field select **USB** then press the **Select USB Plotter** button to open the **Select USB Plotter** window. Please ensure **CUTTER** is selected then click the **OK** button to save the settings and close the Select USB Plotter window. Select the **Accept/Save** button to save the settings and close the **Setup plotters** window. (Below)



Select the blue **pen** icon found under the word **Tools** to bring up the **Cutting Control Panel**. Ensure the **ROLAND PC60(Cutting)** is selected in the cutter panel and that the **Material** field matches the width of the media placed in the cutter. Select **Start** to cut out the test sample. (Below)



Congratulations! Setup is complete.