

# Flexi Setup

For the  
Servo 2400 & 4800

# 1-1 Device Manager

- ◆ Open the Device Manager by going to the Control Panel: Device Manager.
- ◆ For Windows XP, go to: Control Panel: System: Hardware: Device Manager
- ◆ The cutter should be plugged in and turned on during this process.

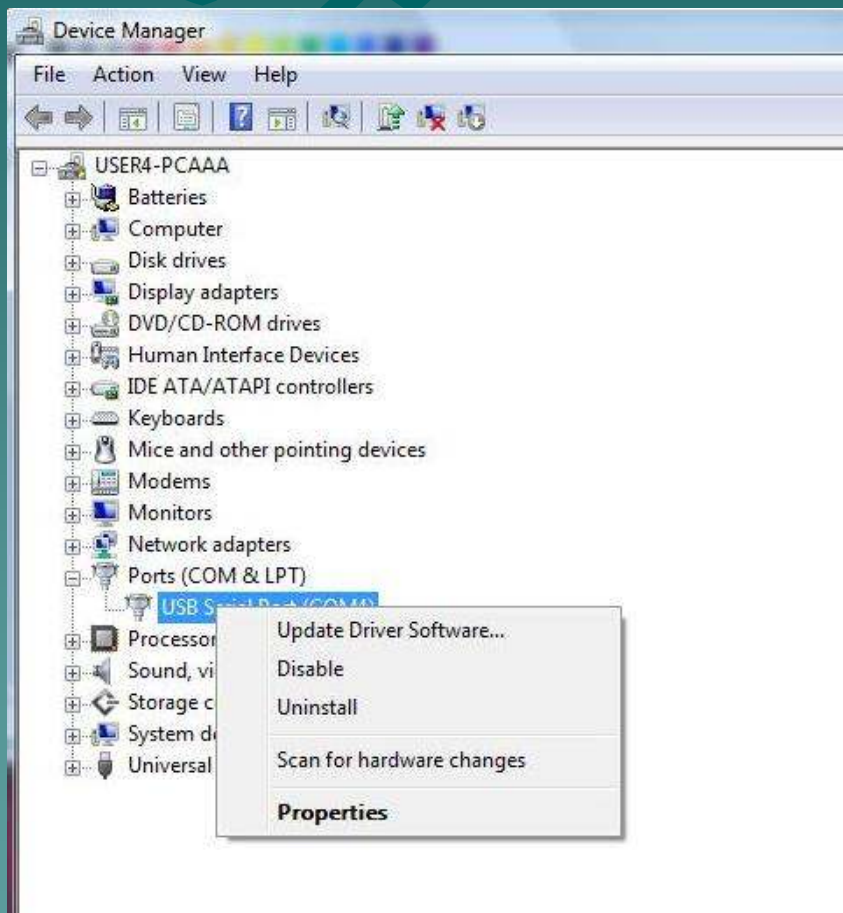


# 1-2 Device Manager

- ◆ Click on your USB connection under the Ports section.

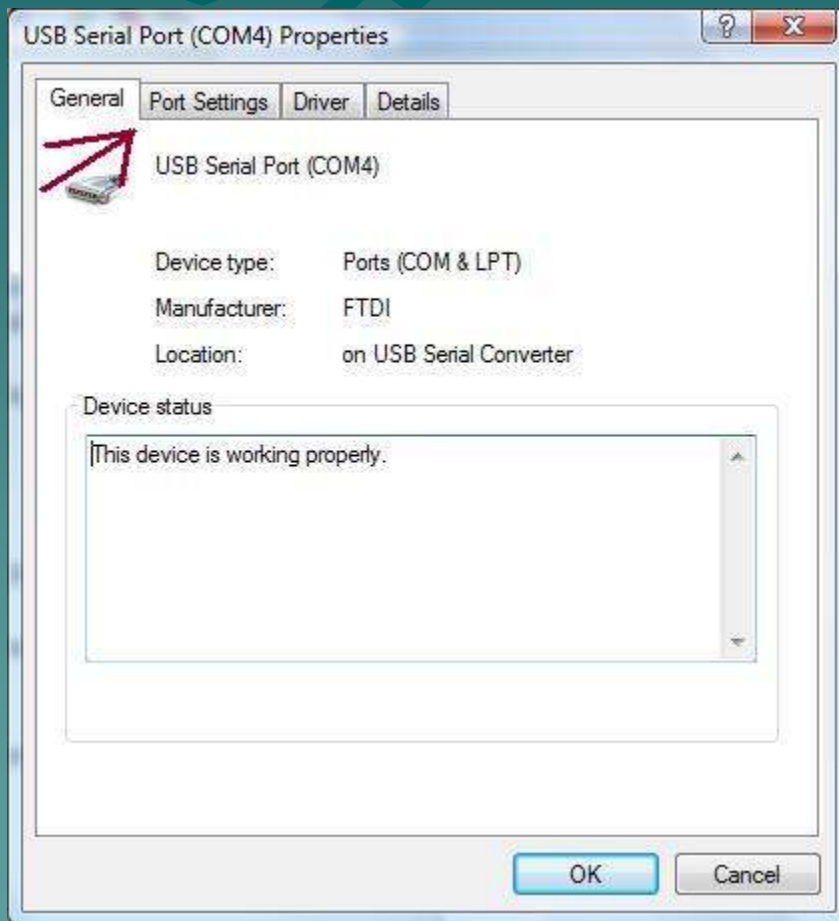


# 1-3 Device Manager



- ◆ Right-Click and select Properties

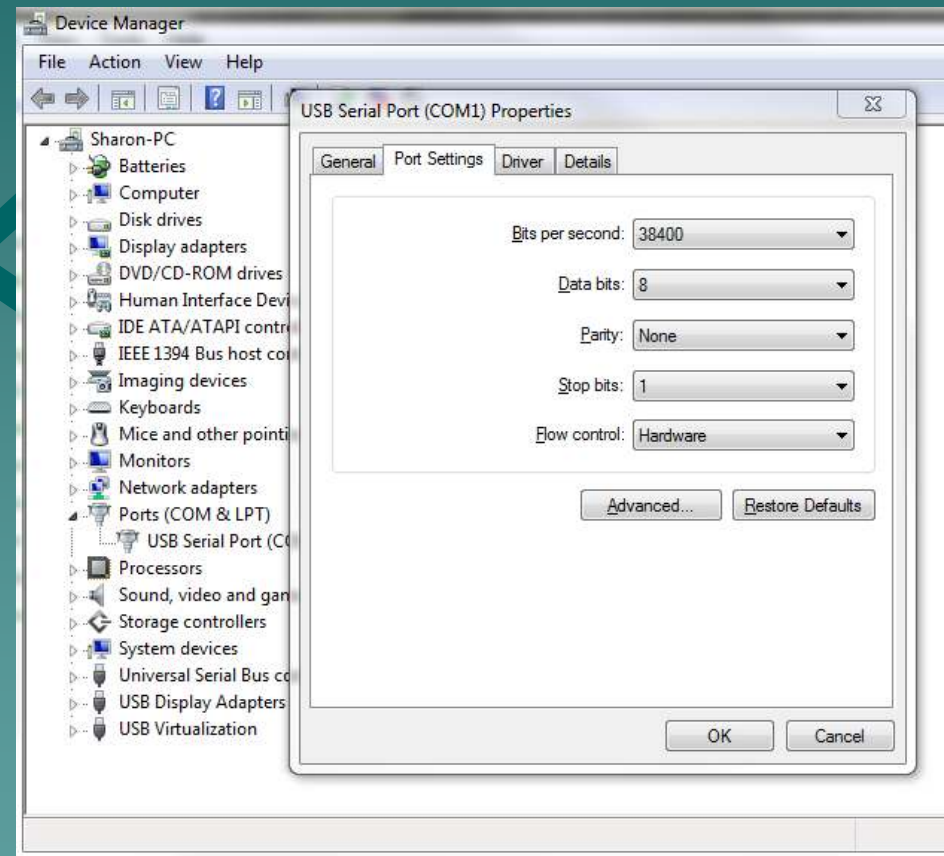
# 1-4 Device Manager



- ◆ Go to the Port Settings tab.

# 1-5 Device Manager

- ◆ Verify your baud rate is set to 38400.
- ◆ Adjust the Flow Control to “Hardware” from this same screen.



# 1-6 Device Manager

- ◆ If the COM number needs to be changed, click on the Advanced Settings button.
- ◆ Change the COM number on the top dropdown.
- ◆ Click OK when finished.



# 2-1 Flexi

- ◆ To add a new setup in Flexi, open the Production Manager.



- ◆ Go to Setup: Add Setup.



# 2-2 Flexi

Choose a device

What is the brand name of your vinyl cutter?

What is the

- ACS
- Allen Datagraph
- AnaGraph
- APD
- Aristo
- Asbru
- Automation
- Brain Power
- CalComp
- Compact Sign
- Concept
- Copam
- Creation-Kingcut
- Creation-PCut
- CutterPros
- Desay

Back Next Cancel

- ◆ Select the brand and Cutter Type.

Choose a device

What is the brand name of your vinyl cutter?

CutterPros

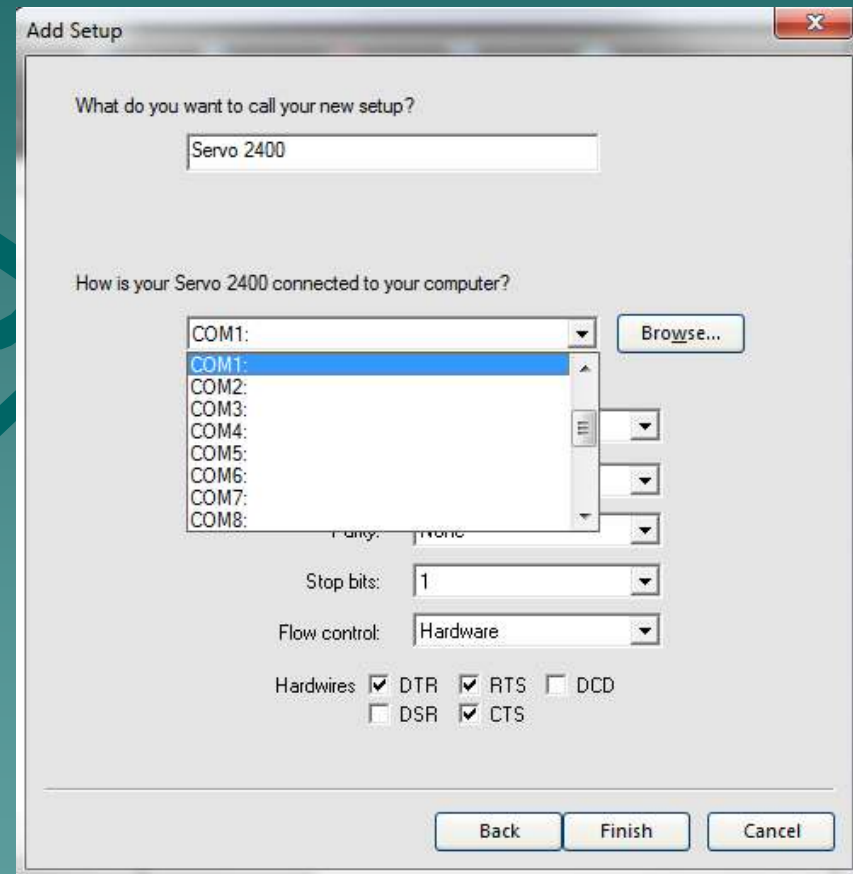
What is the model name of your CutterPros?

- Contour 2400
- Contour 2400
- Contour 4800
- CR1200
- CR1300
- CR630
- CR730
- Servo 2400
- Servo 4800

Back Next Cancel

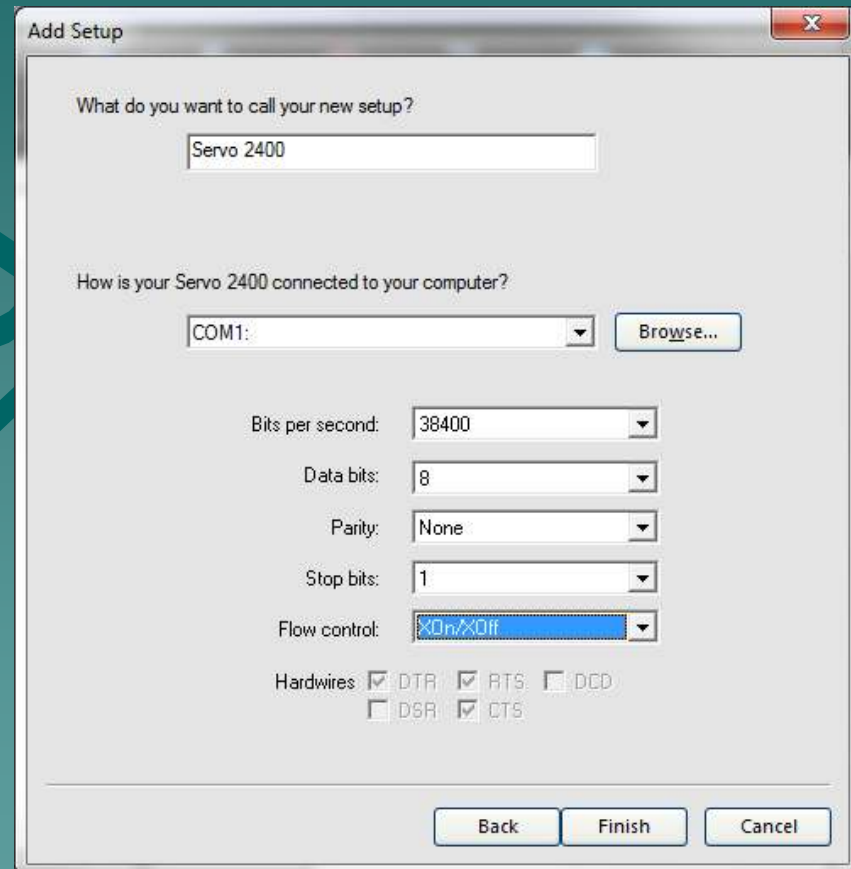
## 2-3 Flexi

- ◆ On the next page, select which COM port the cutter is connected to.
- ◆ This information is on the device manager.

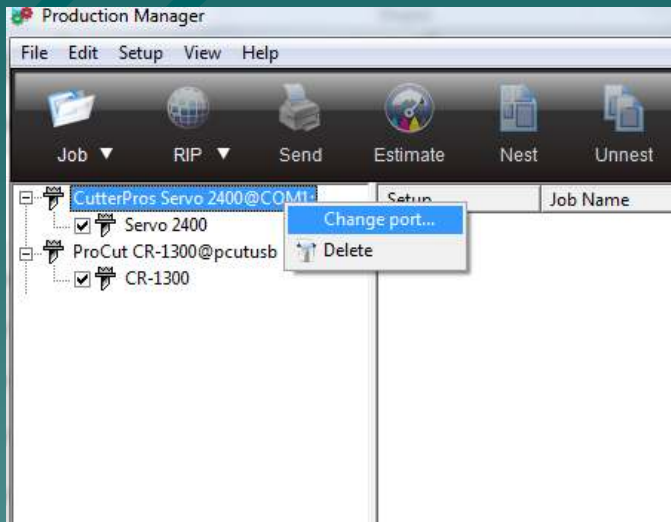


# 2-4 Flexi

- ◆ Set the 'Bits per second' to 38400.
- ◆ The Flow Control should be set to "XOn/XOff"
- ◆ Click Finish and you're done!



# 2-5 Flexi



- ◆ To change settings after the initial setup of the cutter:

- ◆ Go to the cutter in Production Manager, right click and select "Change Port".

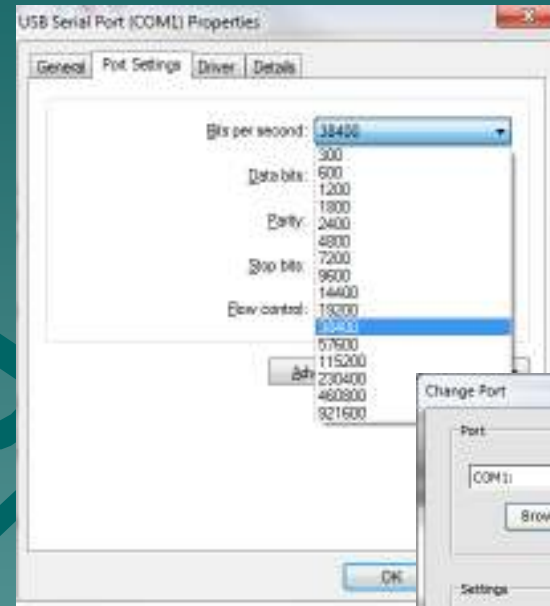


# 3-1 BAUD



- ◆ To check the cutter's baud rate when on the Speed/Force screen:
- ◆ Click the "Set" button.
- ◆ To change this setting, hit the Force left and right buttons.
- ◆ Click "Set" to get back to the main screen.

# 3-2 BAUD



- ◆ The Baud rate is the rate of transfer of information from the computer to the cutter. This number must match in 3 places in order for information to be processed correctly.
- ◆ 1. In the cutter as previously described.
- ◆ 2. In the Device Manager (Listed as "Bits per second")
- ◆ 3. In Flexi ( Listed as "Bits per second")

# The End

CutterPros does not support Flexi in any way beyond initial setup. Please review the Flexi Help for more information.

<http://www.cutterpros.com/downloads> for further information.

To speak with a technician, submit a ticket at <http://www.cutterpros.com/support/> or call 888-828-8776 x227

CutterPros.com/Hahn Ventures LLC is NOT liable for any software/attachments/instructions/download links/content contained in this presentation. Use the contents of this presentation AT YOUR OWN RISK. CutterPros.com/Hahn Ventures LLC is NOT responsible for any damages incurred to your computer hardware/software or any possible viruses/Trojans/malware or any other type of damaging programs that may be contained in the links and/or attachments. It is your responsibility to verify the contents before using any of the information contained in this presentation. By using the contents in this email you agree to hold CutterPros.com/Hahn Ventures LLC harmless of all liability and damages. You agree that you are totally responsible for what you put on your computer, software you install on your computer and files you download to your computer.