

Creation CorelDraw12. 13. 14 .15 plug-in installation manual

1. Please make sure your computer have installed CorelDraw12 or X3 or X4 or X5.
2. Open the installation programm “ Creation CorelDraw12,X3,X4,X5 Plug-in Setup.exe” of Creation CorelDraw12,X3,X4,x5 plug-in.



3. Please select a language as below:



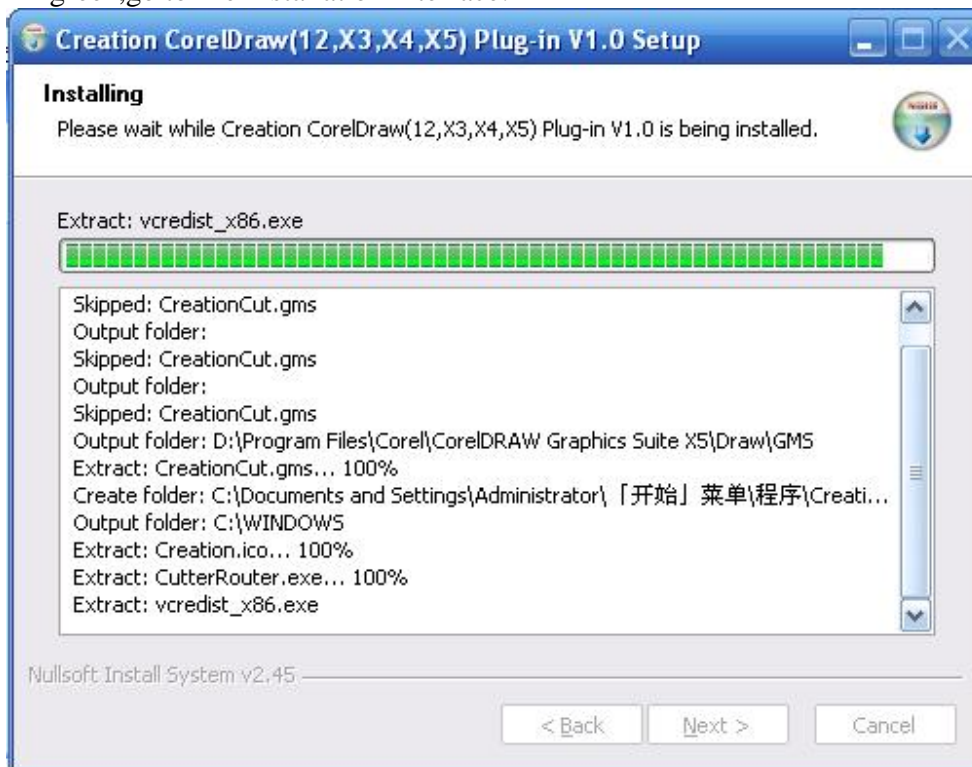
4. Click Ok,go to installation interface, then show existing plug-in version,as below:



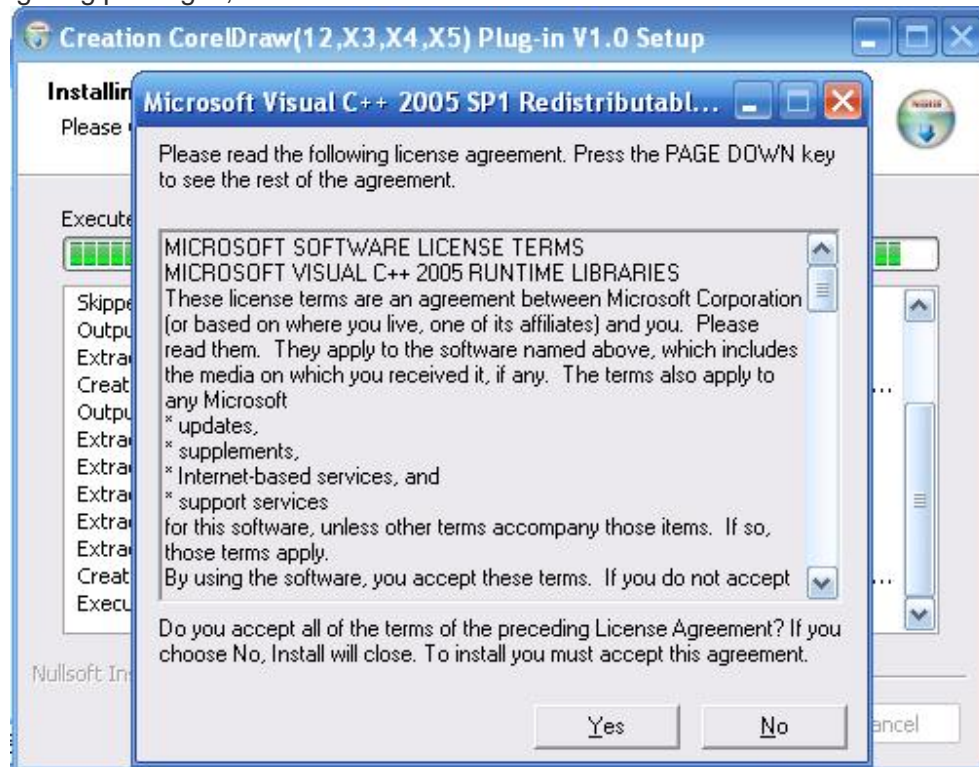
5. Click next, then check license agreement, include copyright and history version information.



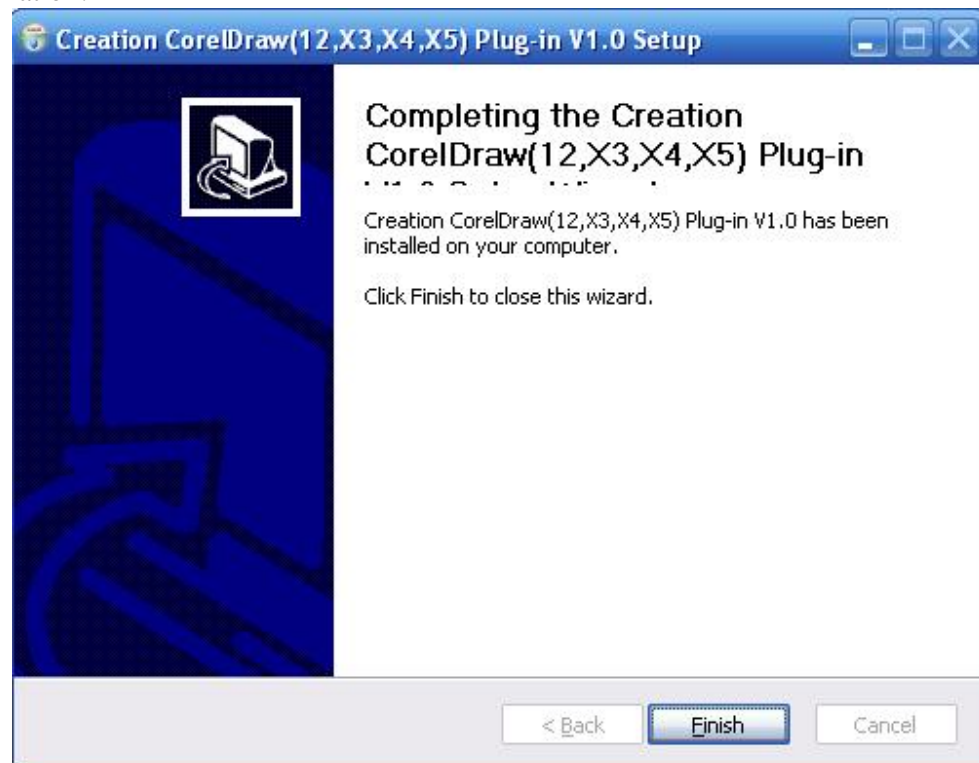
- 6 Click "I Agree", go to file installation interface.



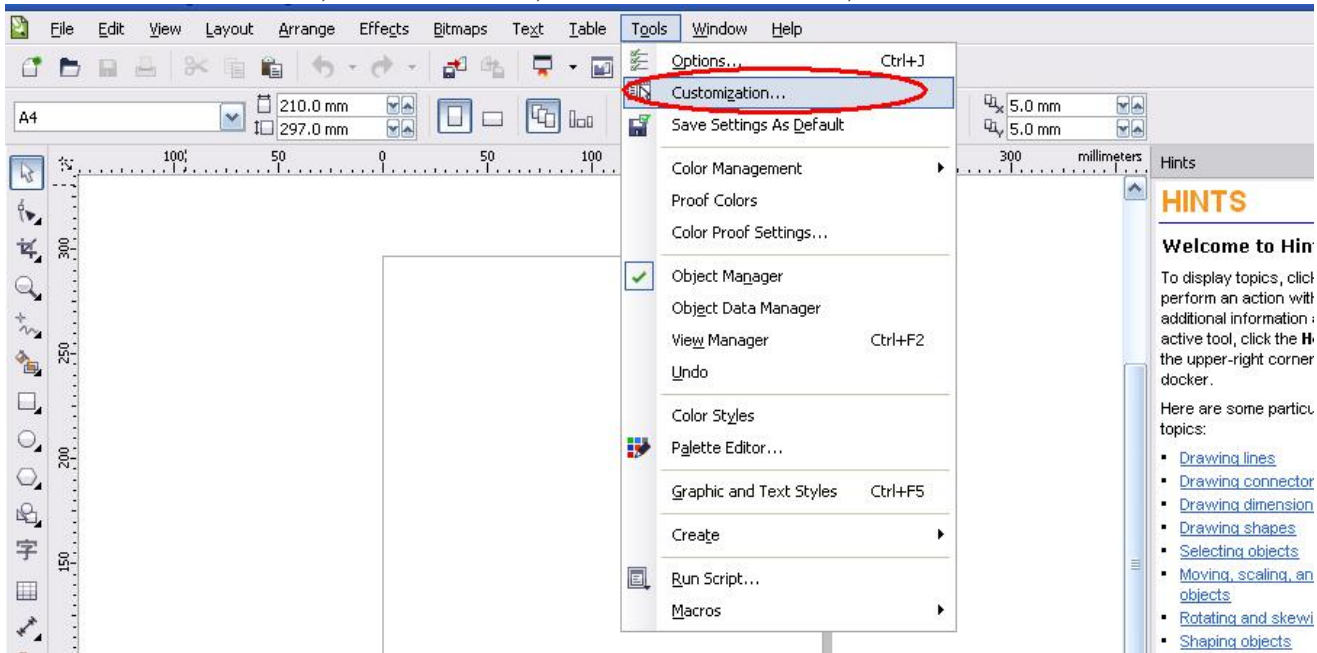
6. Install configuring packages,Select" Yes".



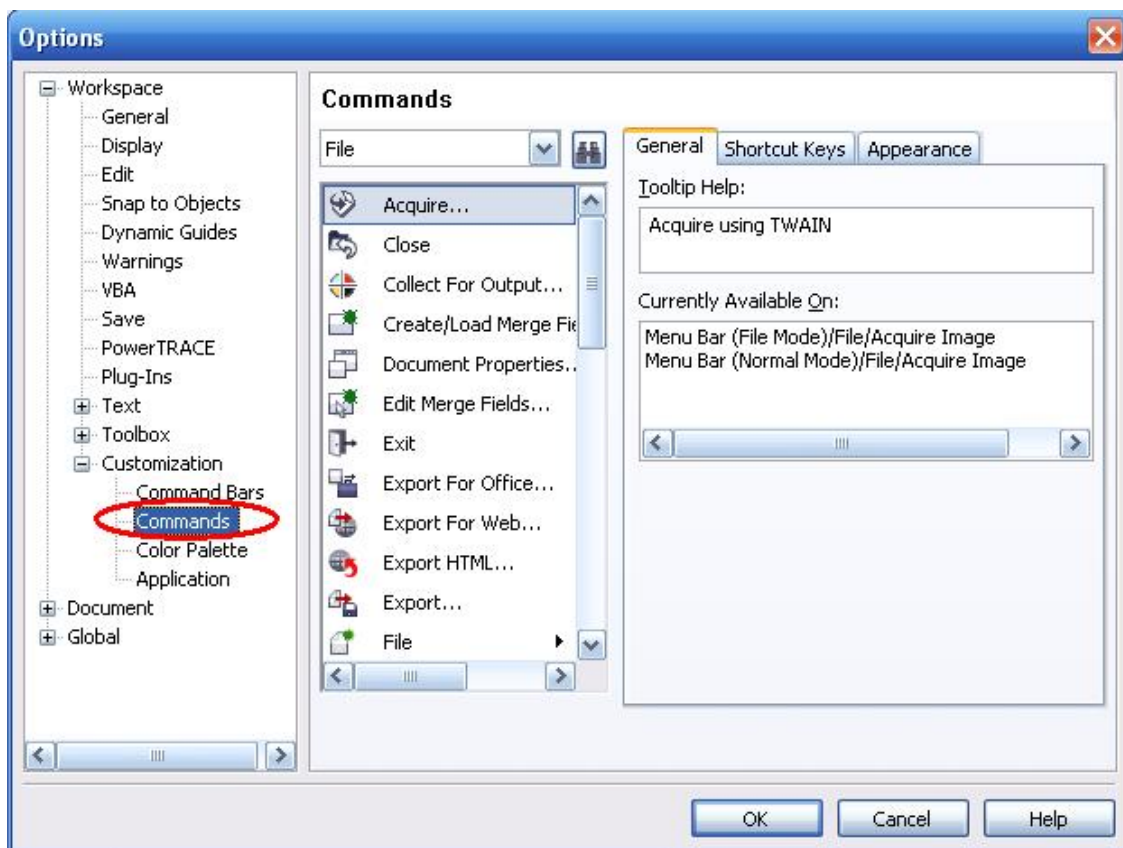
8. Finish Installation.



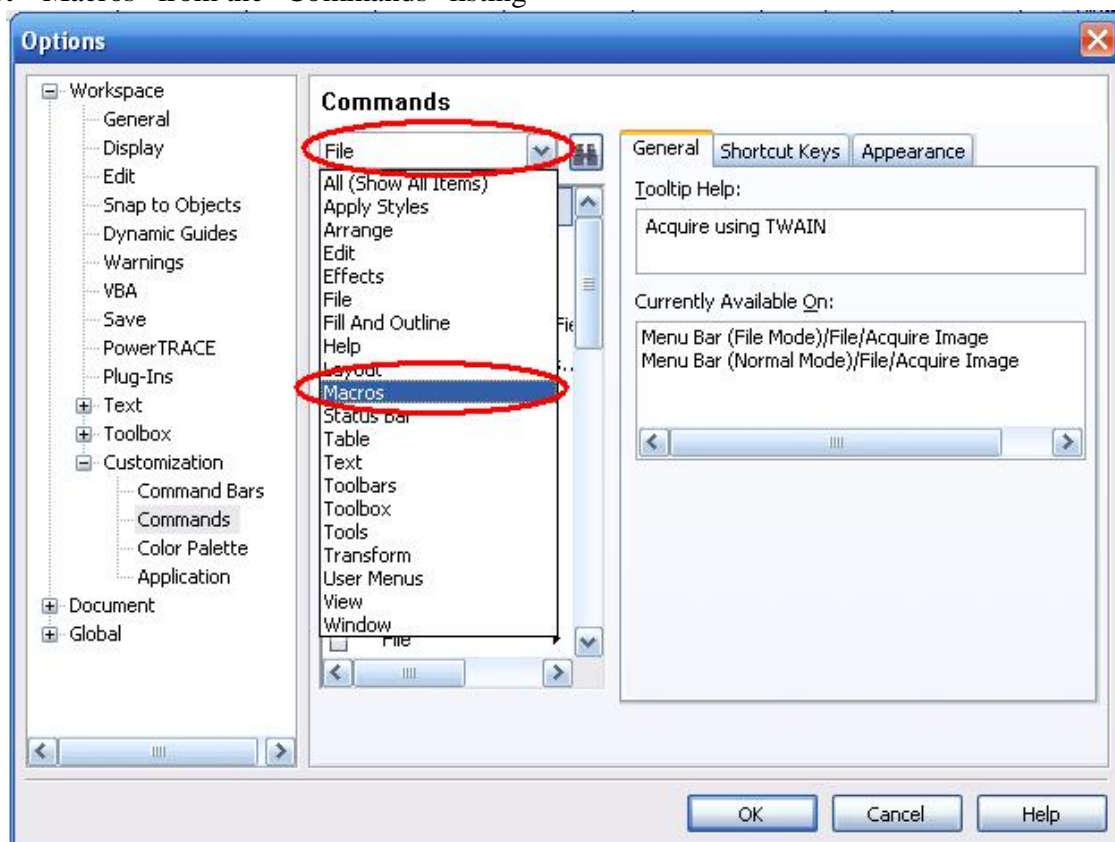
9.After finish installation, start CorelDraw,create a blank document,select menu “Tool”->”Customization”



10.Please select the “Commands” in the left listing of the “Options” dialog

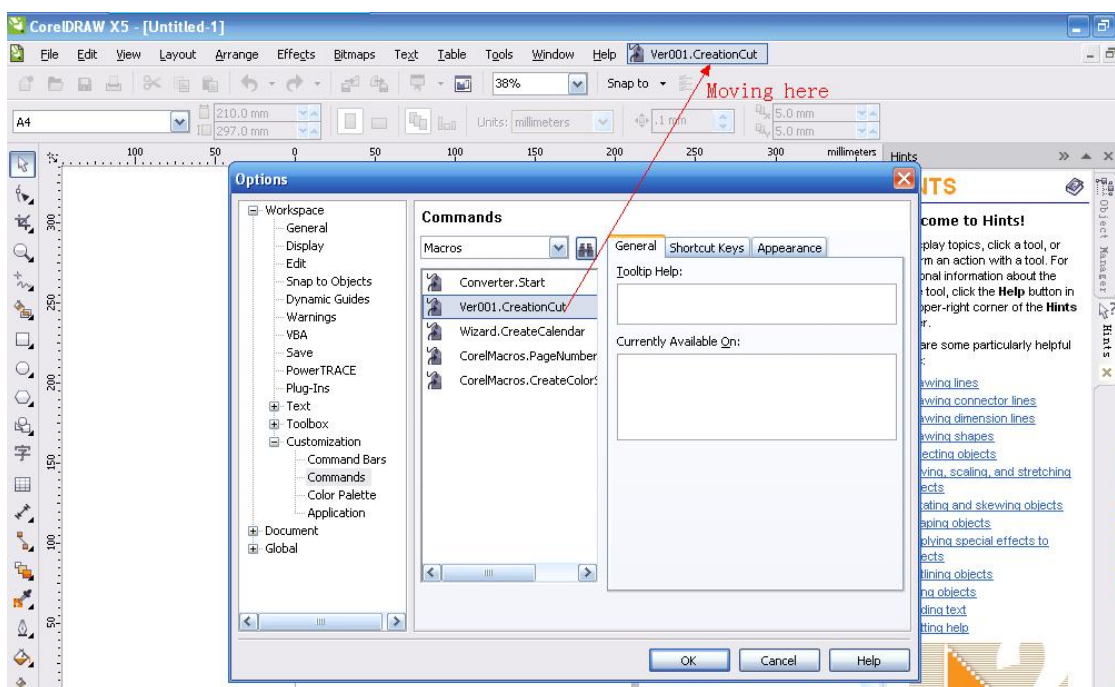
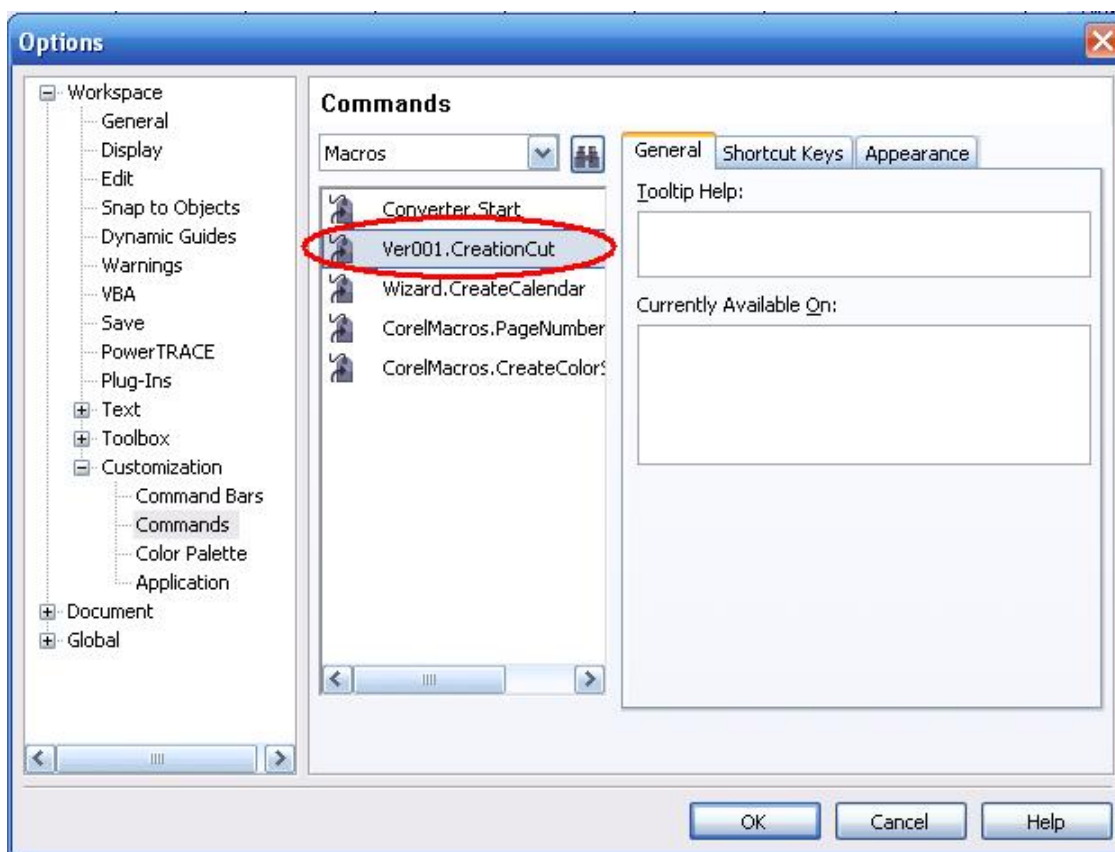


11. Select “Macros” from the “Commands” listing



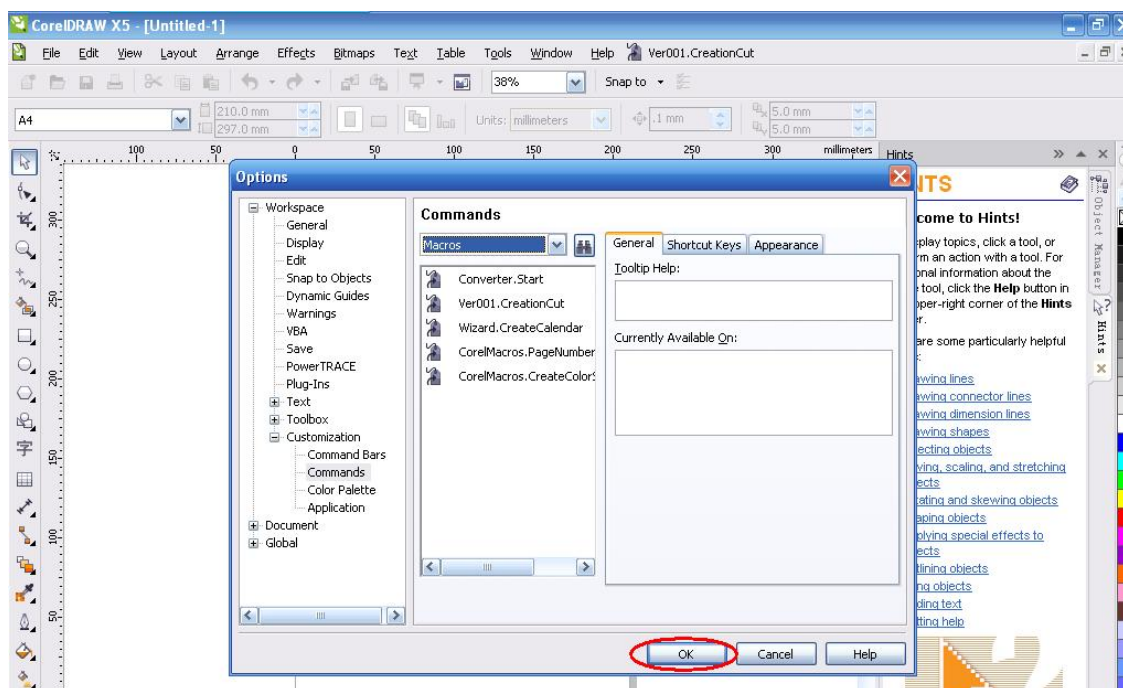
12. Select “Ver001.CreationCut”(Note: Show “CreationCut.Ver001.CreationCut” in CorelDraw12 version). And move to menu bar.as below pictures:

Creation CorelDraw12. 13. 14 .15 plug-in installation manual

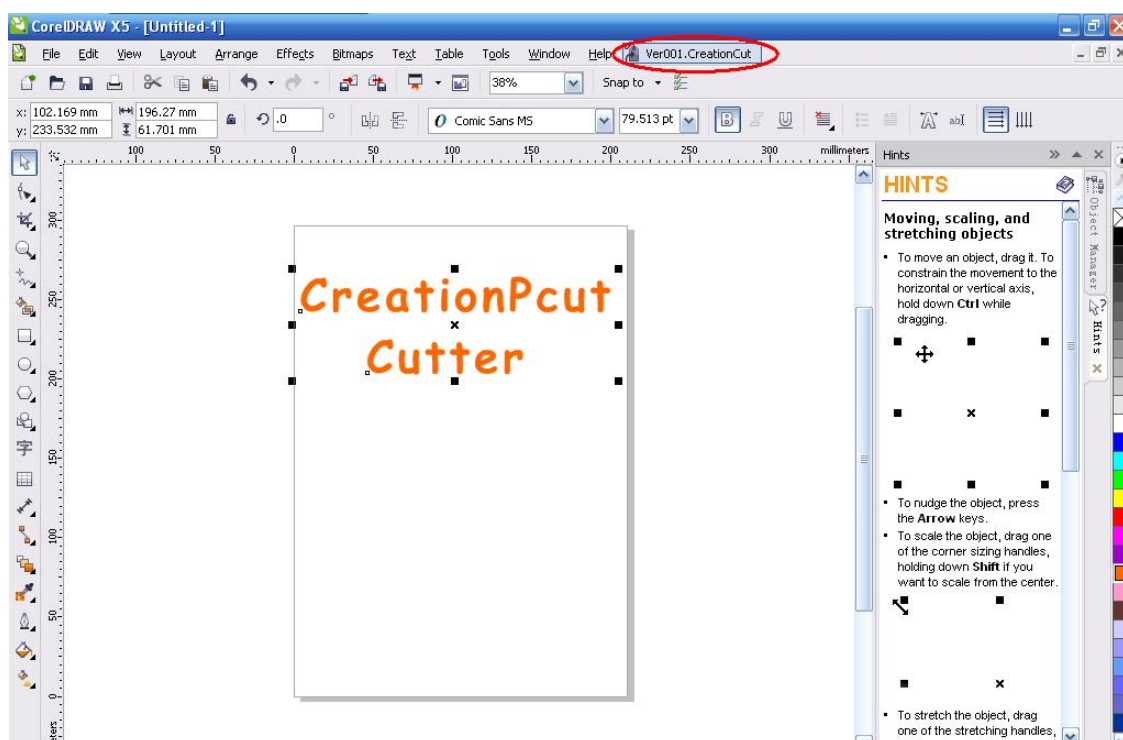


13. Click “Ok”

Creation CorelDraw12. 13. 14 .15 plug-in installation manual



10. Select the design which will be output, then click  in the menu bar.



10. It will start CutterRouter automatically and display / preview the output design.



11. Select the matching machines and port, then Click Sendt to output.