

SignCut Setup/Configuration

Editors notes: This document covers how to setup Signcut Software.

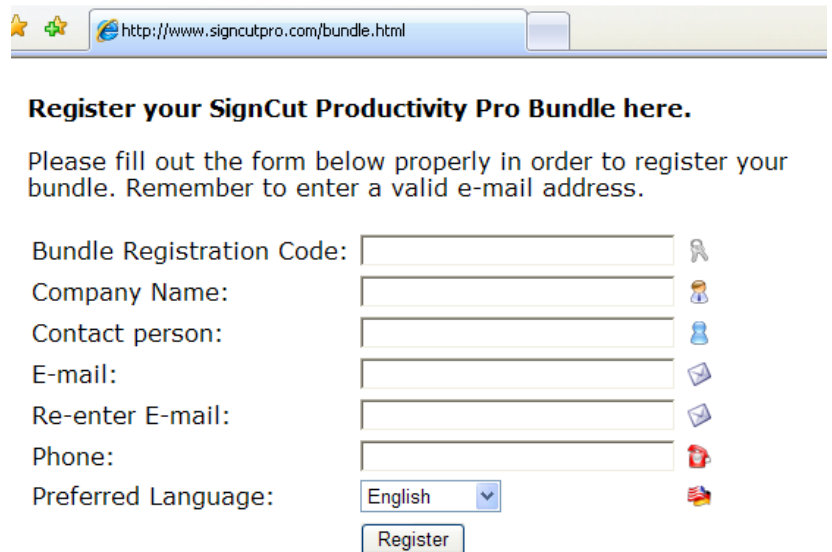
Sections in this document

Click on a section to skip to it.

- 1. Download**
- 2. Initial Setup**
- 3. Your First Cut**

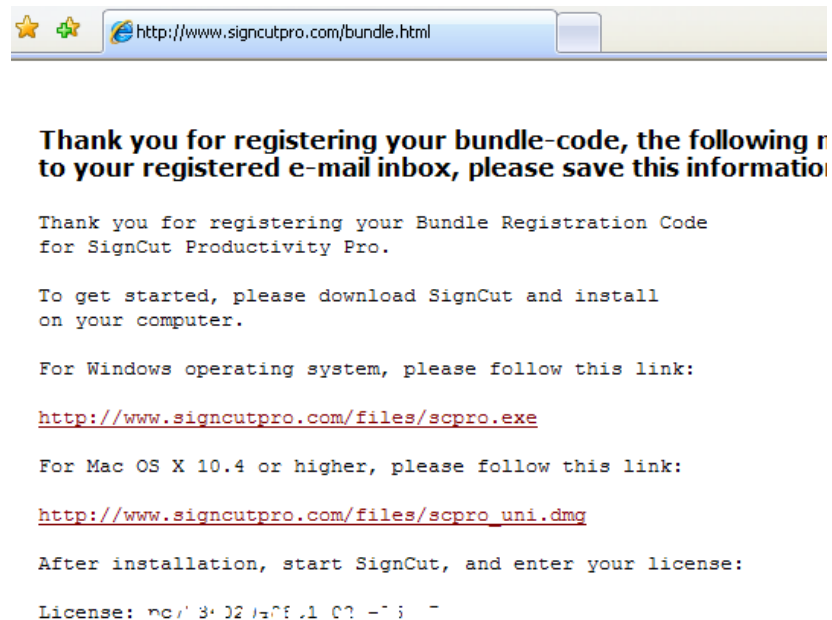
1. Download

Go to <http://www.signcutpro.com/bundle.html> in your Internet browser, and fill out the form.



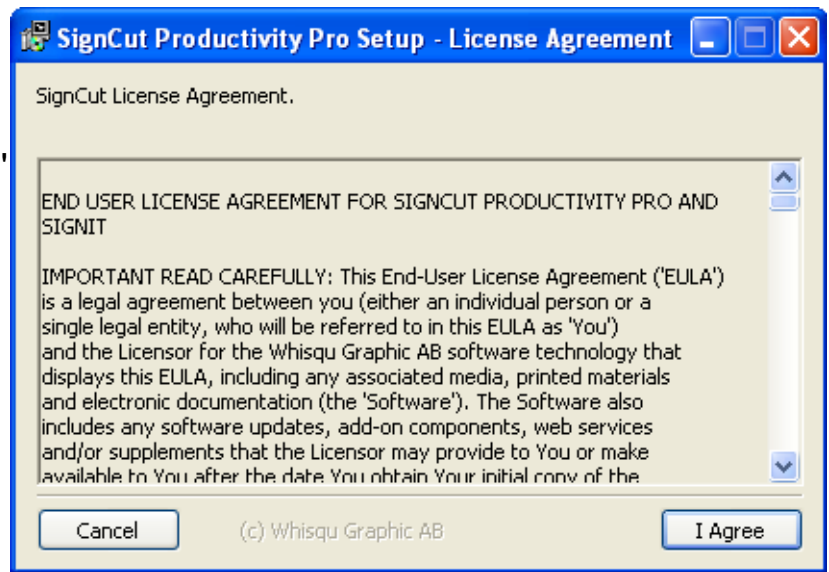
The screenshot shows a web browser window with the URL <http://www.signcutpro.com/bundle.html>. The page content includes the heading "Register your SignCut Productivity Pro Bundle here." followed by instructions: "Please fill out the form below properly in order to register your bundle. Remember to enter a valid e-mail address." The form contains the following fields: "Bundle Registration Code:" (with a key icon), "Company Name:" (with a person icon), "Contact person:" (with a person icon), "E-mail:" (with an envelope icon), "Re-enter E-mail:" (with an envelope icon), "Phone:" (with a phone icon), and "Preferred Language:" (a dropdown menu set to "English" with a flag icon). A "Register" button is located at the bottom of the form.

The next page will display the download link, and your registration information. Print this page or write down the License code, as you will need it later. Click on the download link and choose the option to Save the file.

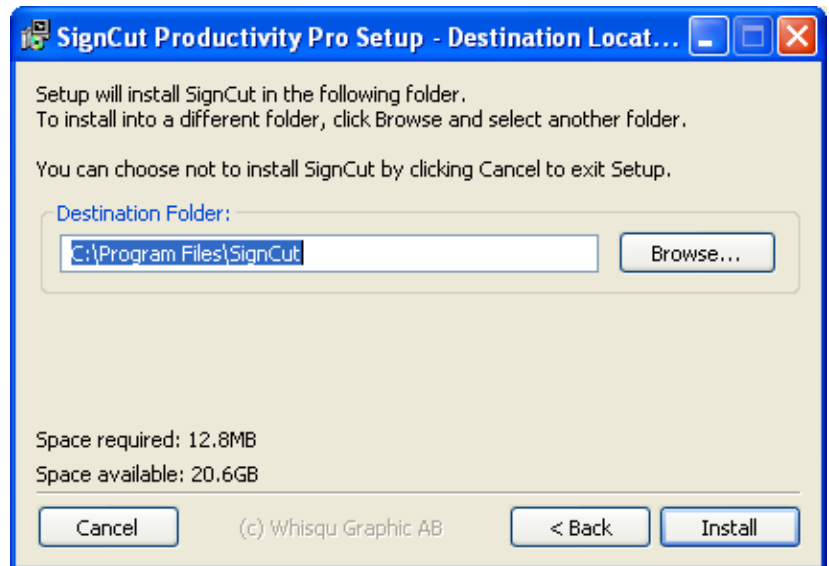


The screenshot shows a web browser window with the URL <http://www.signcutpro.com/bundle.html>. The page content includes the heading "Thank you for registering your bundle-code, the following r to your registered e-mail inbox, please save this informatio". Below this, it says "Thank you for registering your Bundle Registration Code for SignCut Productivity Pro." and "To get started, please download SignCut and install on your computer." It then provides instructions for Windows and Mac OS X, with links to download files: <http://www.signcutpro.com/files/scpro.exe> for Windows and http://www.signcutpro.com/files/scpro_uni.dmg for Mac OS X. It concludes with "After installation, start SignCut, and enter your license:" and "License: nc / 3 + 02 / - 08 .1 0? - 7 ; -".

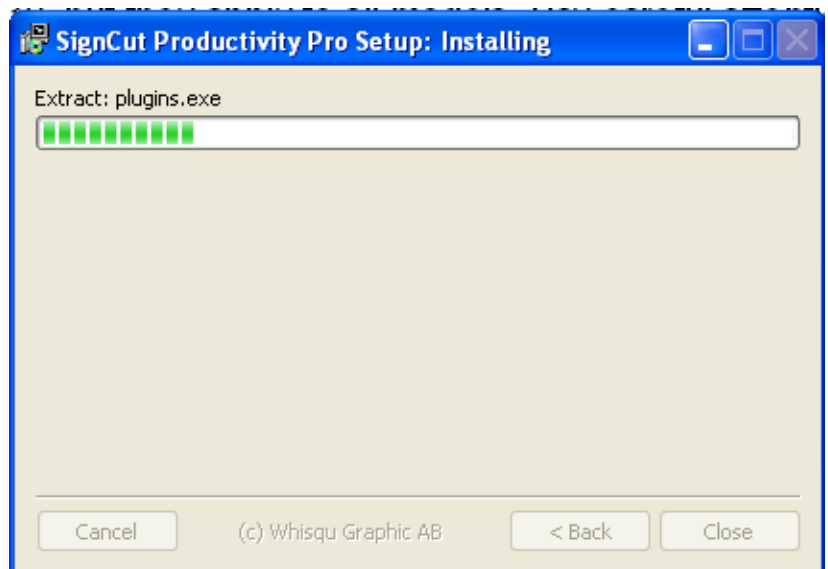
Run the file you downloaded. The first window that appears will be the license agreement. Read it and click on the 'I Agree' button to continue.



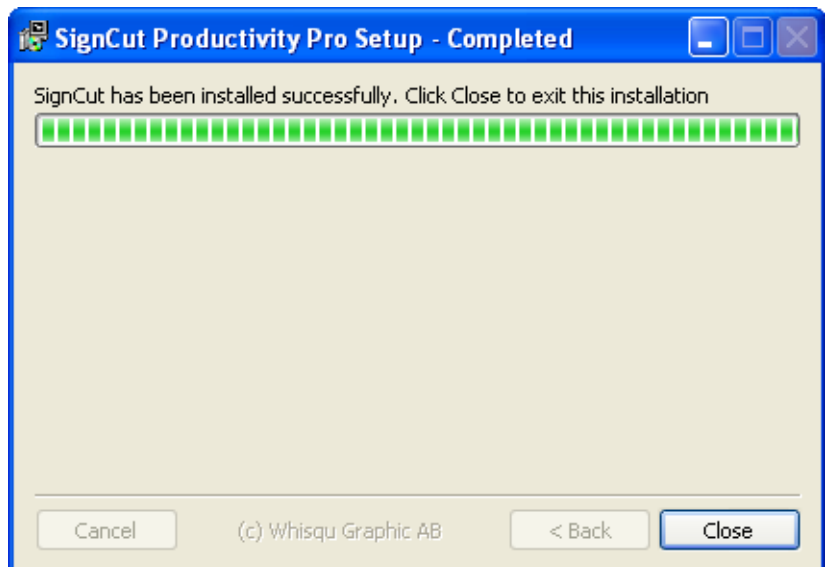
The next window will ask you where to install the program files to. You may change the default if you would like. Click on the 'Install' button to continue.



SignCut will copy the installation files.



Installation is complete. Click on the 'Close' button.

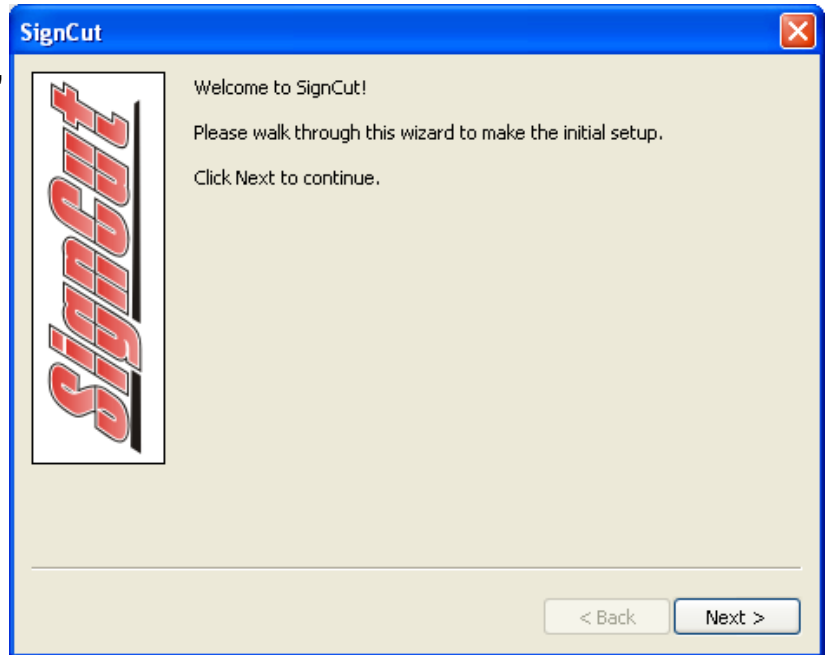


2. Initial Setup

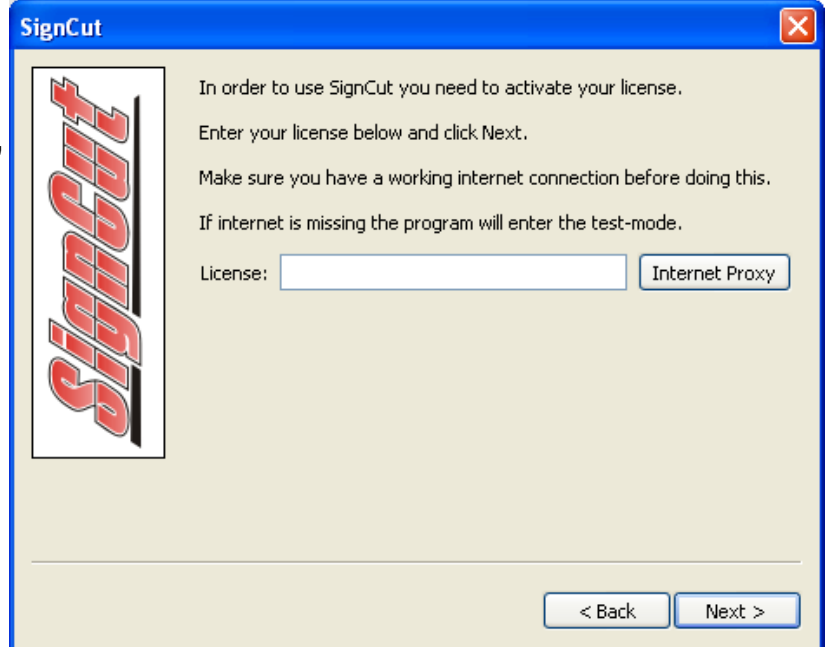
Open SignCut by clicking on **Start > All Programs > SignCut Productivity Pro > SignCut**.



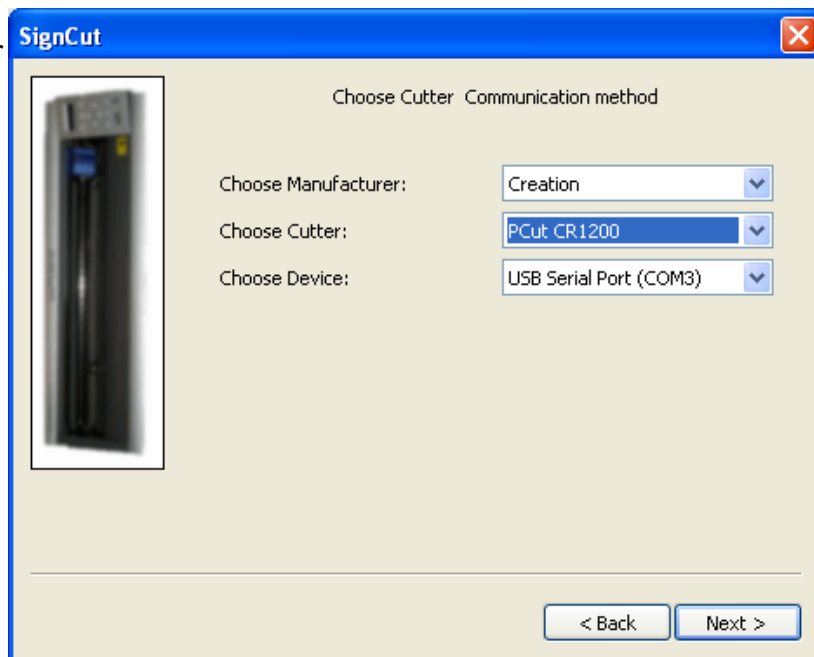
The first time SignCut is opened it will launch the Initial Setup. Click on the 'Next >' button to continue.



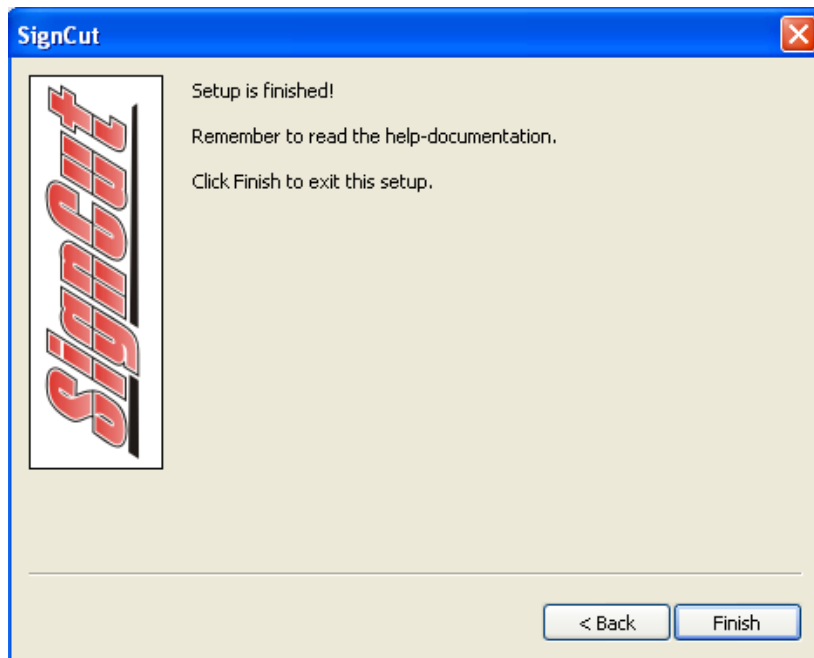
The next window will ask you for the License key you were given during registration. Enter it and click on the 'Next >' button. (This step may take a while depending on your Internet speed)



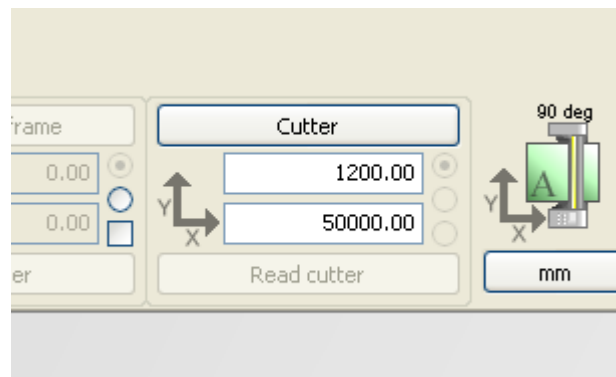
On the next window select the manufacturer (Creation), your model of plotter, and which port the plotter is setup on (in Device Manager, during plotter setup). Click the 'Next >' button to continue.



Click on the 'Finish' button.

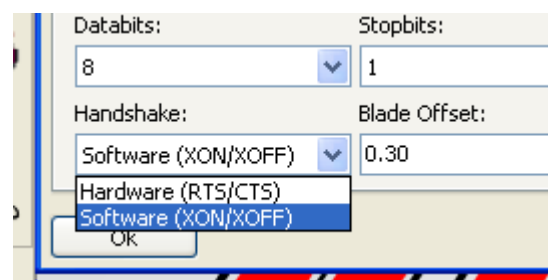


Now we need to check and make sure Signcut has the correct port settings. Click on the 'Cutter' button.



The 'Cutter' window will open. Everything should be set correctly, except for 'Handshake:'. Set this to 'Software (XON/XOFF)'. Click on the 'Ok' button to continue.

Now that all of the settings have been configured, **restart your computer**.



3. Your First Cut

Launch the SignCut software. The SignCut Logo is already loaded onto the stage by default. Click on the 'Cut Out' button and the plotter will cut out the SignCut Logo.

